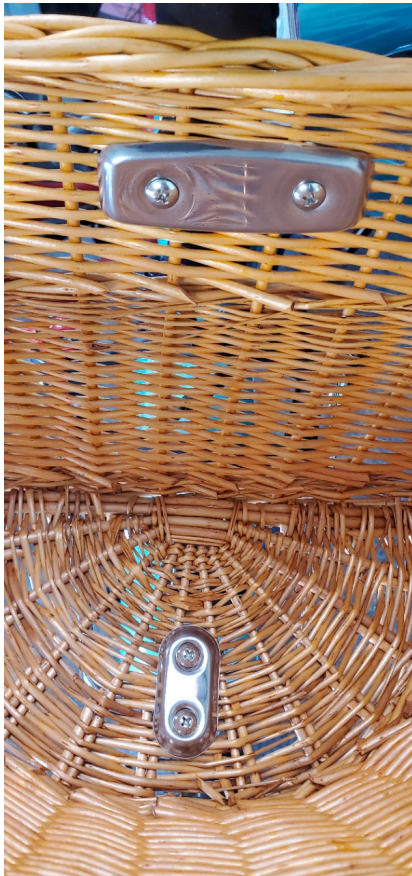


Kachemak Cruiser Plus Front Basket Attachment

- Collect all parts needed: Lower support bracket, nuts, screws, and metal gaskets.
- Attach the lower bracket to the front face of the suspension fork near the top. The short parts of the bracket should face downward.
- Guide the wires and brake cables through the gap in the top bracket, making sure there is no pinching.
- Place the basket on the lower bracket and up against the top bracket and center it.
- You'll need to poke holes through the basket in order to get the bolts through. You can use the screws, or a small phillips screwdriver. First align the top bracket, and poke holes that line up with the bolt holes on the bracket.
- Install the bolts through the wider metal gasket, then through the basket and through the bracket holes. Attach nuts on the bolts and tighten both.



- Poke holes in the bottom of the basket the width of the smaller gasket holes, and such that they are on either side of the front part of the lower support bracket.
- Install the bolts through the two holes of the smaller metal gasket, through the bottom of the basket, and into the threaded plate. Tighten the screws.



- Once all the screws are tightened down, you're ready to use your classic wicker basket! It's best for lightweight items under 15 pounds.

